

# ATCC MOVABLE Automatic Traffic Counter and Classifier



Exclusively  
for  
Traffic Mangers &  
DPR Consultants



## Why AI based ATCC Movable?

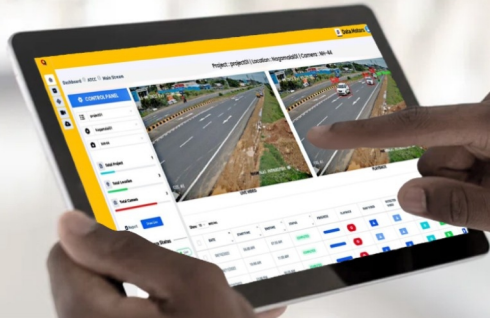
The ATCC Movable system comprises a smart GPU-powered kit, Camera with batteries and other essential accessories, making it highly effective for vehicle detection at any time and in any location. This system is particularly valuable for Traffic Managers and DPR (Detailed Project Report) consultants, aiding them in efficient traffic management and planning.

## How ATCC Movable works?

Our supplied cameras are strategically placed at suitable angles to ensure without occlusion of vehicles. A GPU kit, installed alongside the cameras, processes the video data using advanced analytics for accurate detection and classification. The results are displayed in real-time on a dashboard and can be shared with your customers, providing valuable insights into traffic patterns.

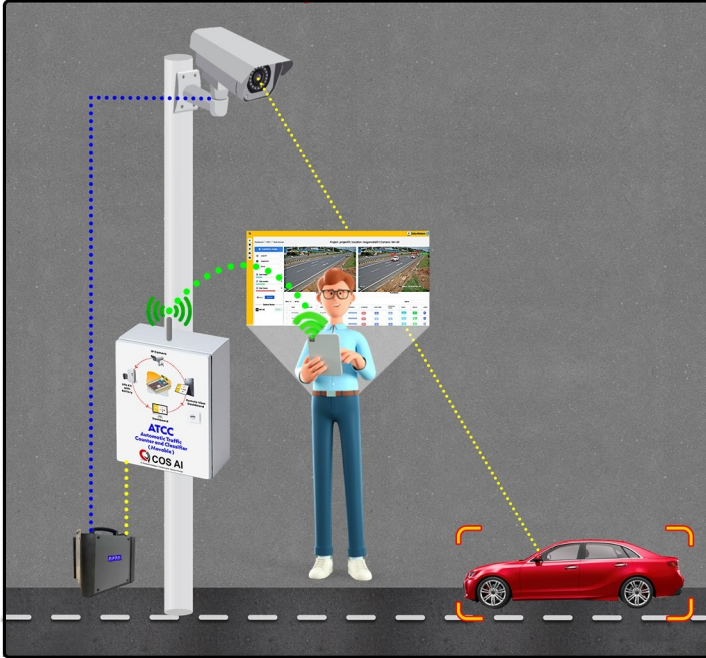
## Key Features:

- ★ Detects more than 13 Classes, covering most of the IRC Classes(16 Classes).
- ★ Achieves 95% classification accuracy and 98% counting accuracy after post audit.
- ★ Portable and easily transported to any location.
- ★ Designed specially for Indian roads.
- ★ Detects vehicle axle configuration.
- ★ Free Flow Traffic Count & Classification up to 4 lanes.

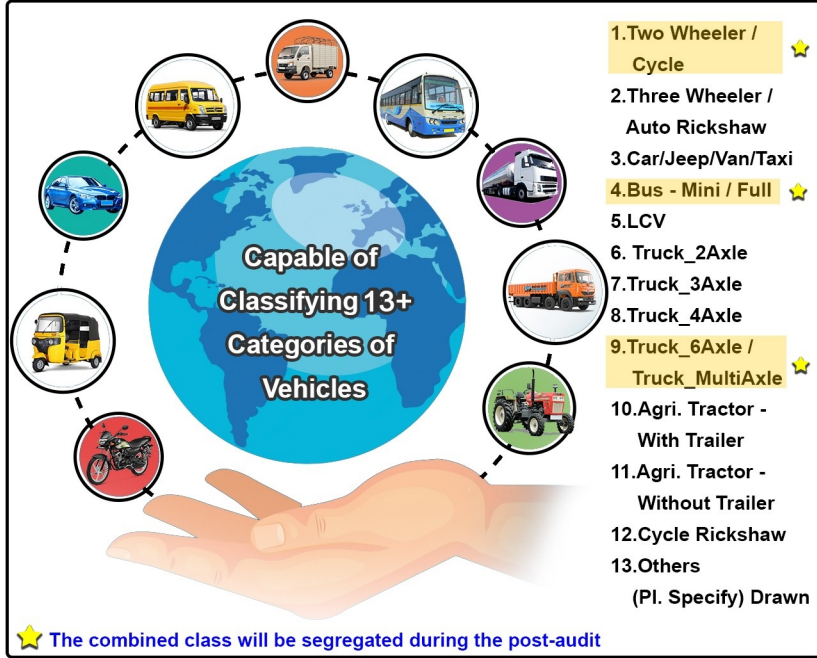




## COS AI Deployment Architecture

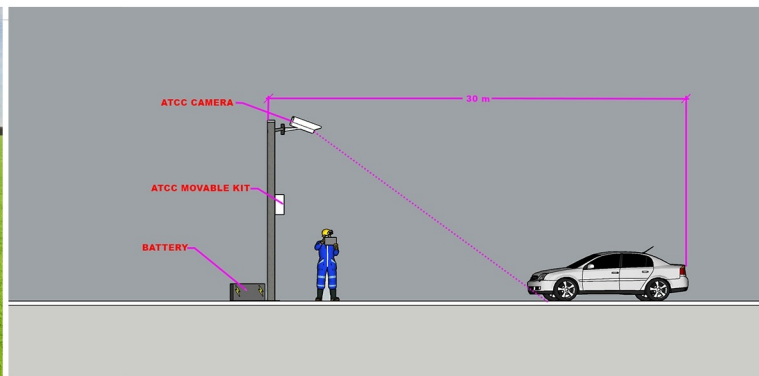
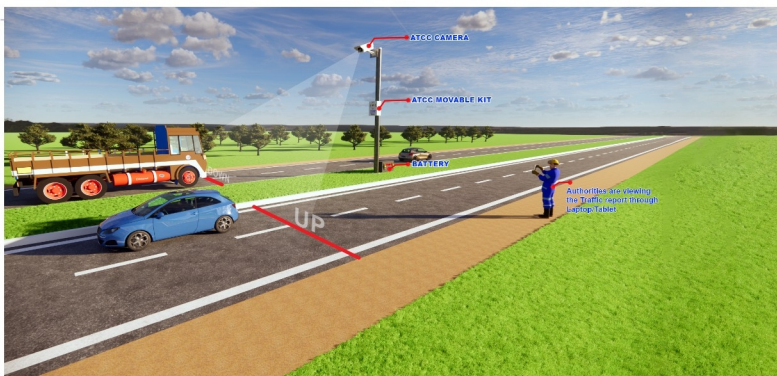


## IRC Vehicle Classes vs COS AI Classes



### COS AI 's Indicative ATCC Movable Components - (One location One kit for 2-lanes)

Sl.No	ATCC Movable Components	Qty.	Unit	Cost per unit + Tax	Remarks
1	COS AI ATCC Movable Software	1	No.	Contact	COS AI
2	Hardware of COS AI LPU Kit	1	No.	Contact	COS AI
3	IP Camera 2MP / 5MP - HIKVISION / DAHUA	1	No.	Contact	Client
4	8m Telescopic tube	1	No.	Contact	Client
5	PoE Switch TP Link / HIKVISION	1	No.	Contact	COS AI
6	Internet Dongle	1	No.	Contact	COS AI
7	To viewing the real time scenario				
	Laptop (Specs.: i5/ 8GB RAM / 512 GB SSD) - Optional	1	No.	Contact	Client
	Tab (Windows / Android)	1	No.	Contact	Client
8	APPA Portable Lithium-ion battery for LPU Kit and Camera power supply (Up to 10 hours backup)	1	No.	Contact	Client / COS AI



### Terms & Conditions

- ★ The client is responsible for covering the costs associated with Uninterrupted Power Supply, lighting, Internet facilities, Network Cabling, Camera mounting, and any other miscellaneous works.
- ★ Camera installations must be positioned at a minimum height of 12 feet above the surface.
- ★ The video coverage area must not have stationary vehicles parked within it. Only through-traffic is preferred.
- ★ Usage in areas with mixed traffic, such as road crossings, traffic signals, or leakage roads, is not recommended.
- ★ If a customer requests usage on road crossings, service roads, leakage roads, etc., a separate product should be explored.

**COS AI** - AI Powered Intelligent Transportation System Provider

Please visit other similar ATCC products:

- **ATCC Toll** - Exclusively for Toll Managers..
- **AI based Traffic Camera** - Smart and economical system, Installed Our camera and kit and upload video in cloud for and share the result to the customer.
- **ATCC+ANPR** - Premium product both ATCC & ANPR analytics done in single unit.
- We also provide customized AI-based services in ITS for our clients.

Please contact us or visit [www.cosai.in](http://www.cosai.in) for more information.

**COS AI**  
AI Powered Intelligent Transportation System Provider

**Head Office :**

**COS AI** 6/13, Kamaraj Nagar 4th  
Street Tallakulam, Madurai-625002

**Branch Office :** Bangalore, Chennai

**Contact us**

+91 9443063037

coscmd@gmail.com

[www.cosai.in](http://www.cosai.in)

